

4-gas Detector with Pump

H₂S

CO

O₂

LEL

GasAlert MaxXT II



**WATER
RESISTANT** 

Go the distance, and save

GasAlertMax XT II is the smart, simple, economical way to compliance. Workers feel safe and incidents are minimized so everyone will be able to do more. That means savings realized from business continuity and productivity.



Simple operation, with SmartSample pump.

GasAlertMax XT II reliably monitors up to four hazards and combines straightforward one-button operation with our robust, motorized pump for intelligent, remote sampling, ideal for confined spaces. The GasAlertMax XT II is fully compatible with MicroDock II automated test and calibration system.

Standard Package Contents

- Detector complete with specified sensor(s), stainless steel alligator clip and concussion-proof housing
- Rechargeable lithium polymer battery
- Charging adaptor
- 3 ft. / 1 m calibration hose with quick connect
- 10 ft. / 3 m sampling hose with particulate filter and quick connect
- Reversible screwdriver
- Kit of five spare pump filters
- Manual
- Multi-language CD manual

General Specifications

Size	5.1 x 2.8 x 2.0 in. / 13.1 x 7.0 x 5.2 cm
Weight	11.5 oz. / 328 g
Typical battery life	13 hours @ 32°F / 0°C 8 hours @ -4°F / -20°C Recharges in 6 hours
Certifications and approvals	 Class I, Div. 1, Gr. A, B, C, D IECEX: Ga Ex ia IIC T4 ATEX:  II 1 G Ga Ex ia IIC T4 INMETRO: BR-Ex ia IIC T4
Warranty	Full two year warranty including all sensors

6570-0

	Order Number	
	Yellow	Black
GasAlertMax XT II 4-Gas Detector		
%LEL, O ₂ , H ₂ S, CO	XT-XWHM-Y-NA	XT-XWHM-B-NA
GasAlertMax XT II 3-Gas Detector		
%LEL, O ₂ , H ₂ S	XT-XWHO-Y-NA	XT-XWHO-B-NA
%LEL, O ₂ , CO	XT-XW0M-Y-NA	XT-XW0M-B-NA
O ₂ , H ₂ S, CO	XT-X0HM-Y-NA	XT-X0HM-B-NA
%LEL, H ₂ S, CO	XT-0WHM-Y-NA	XT-0WHM-B-NA
GasAlertMax XT II 2-Gas Detector		
%LEL, O ₂	XT-XW00-Y-NA	XT-XW00-B-NA
H ₂ S, CO	XT-00HM-Y-NA	XT-00HM-B-NA
O ₂ , H ₂ S	XT-X0H0-Y-NA	XT-X0H0-B-NA
O ₂ , CO	XT-X00M-Y-NA	XT-X00M-B-NA
%LEL, H ₂ S	XT-0WHO-Y-NA	XT-0WHO-B-NA
%LEL, CO	XT-0W0M-Y-NA	XT-0W0M-B-NA
GasAlertMax XT II 1-Gas Detector		
O ₂	XT-X000-Y-NA	XT-X000-B-NA
%LEL	XT-0W00-Y-NA	XT-0W00-B-NA
H ₂ S	XT-00H0-Y-NA	XT-00H0-B-NA
CO	XT-000M-Y-NA	XT-000M-B-NA

GasAlertMax XT II Region Codes

For orders outside North America, change order number suffix "-NA" to:

"-EU"	Europe	"-BR"	Brazil
"-UK"	United Kingdom	"-OR"	Other region with 3-pin UK plug
"-AU"	Australia	"-OE"	Other region with 2-pin UK plug
"-CN"	China/New Zealand		

Gas Legend

%LEL	Combustible
O ₂	Oxygen
H ₂ S	Hydrogen sulfide
CO	Carbon monoxide



MicroDock II

Automatic test and calibration station
(see MicroDock II section for additional information)

GasAlertMax XT II**Confined Space Kit****Order Number**

GasAlertMax XT II confined space kit – includes GasAlertMax XT II detector (%LEL, O₂, H₂S, CO), IR connectivity kit, 0.5 LPM regulator, sampling probe, calibration gas (2.5% CH₄, 18% O₂, 25 ppm H₂S, 100 ppm CO)

XT-XWHM-Y-NA-CS

GasAlertMax XT II deluxe confined space kit – includes IR connectivity kit, 0.5 LPM regulator, 10 ft. / 3 m hose, 3 ft. / 1 m hose, sampling probe, concussion-proof boot, auxiliary filter and Fleet Manager II software CD

XT-CK-DL

Detector and calibration gas sold separately

Carrying case for **GasAlertMax XT II** with foam insert

XT-CK-CC

Carrying Accessories**Order Number**

Concussion-proof boot with stainless steel alligator-style clip

GA-BXT

Carrying holster for detector and sampling hose

GA-HXT

Neck strap with safety release

GA-NS-1

Extension strap (4 ft. / 1.2 m)

GA-ES-1

Short strap (6 in. / 15.2 cm)

GA-LY-1

Chest harness

GA-CH-2

Power Options and Spares**Order Number**

Multi-unit (5) cradle charger

XT-C01-MC5

Multi-unit (5) power adaptor

GA-PA-1-MC5-NA*

12-24 Vdc vehicle power adaptor

GA-VPA-1

12-24 Vdc direct-wire power adaptor

GA-PA-3

Replacement power adaptor

GA-PA-1-NA*

**For regions outside North America replace “-NA” with: “-EU” for Europe, “-UK” for United Kingdom and “-AU” for Australia/China.*



Confined Space Kit
XT-XWHM-Y-NA-CS



Multi-Unit Cradle Charger
XT-C01-MC5
Simultaneously charge five detectors



Concussion-Proof Boot
GA-BXT



Multi-Unit Power Adaptor
GA-PA-1-MC5-NA*
Simultaneously charge five detectors



Carrying Holster
GA-HXT
Sampling Probe
GA-PROB1-1



Vehicle Power Adaptor
12-24 Vdc
GA-VPA-1

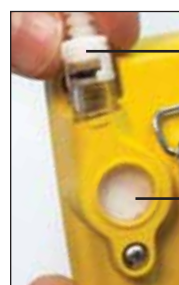


Direct-Wire Power Adaptor
12-24 Vdc
GA-PA-3
Used for emergency vehicles and other applications

Datalogging Accessories	Order Number
IR connectivity kit with Fleet Manager II software	GA-USB1-IR

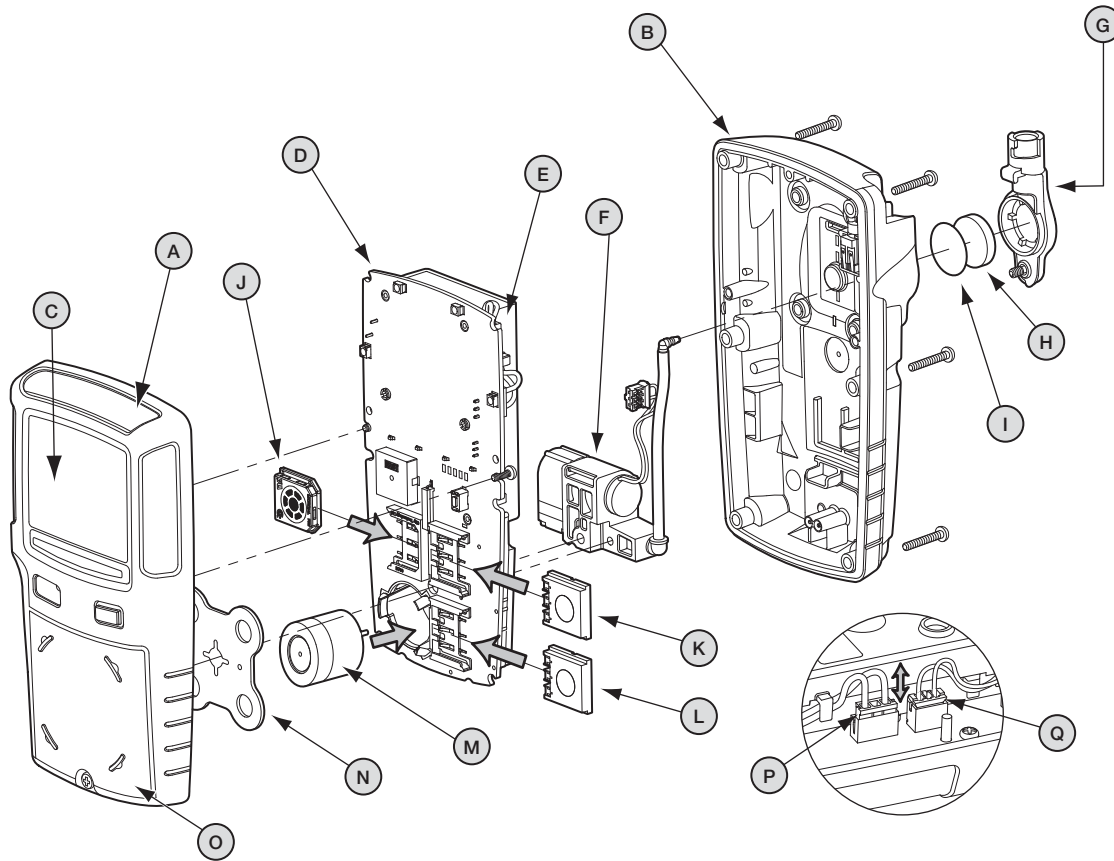
Sampling/Testing Equipment and Spares	Order Number
MicroDock II	
- base station and GasAlertMax XT II docking module with charging cable	DOCK2-2-1C1M-00-G
- base station and GasAlertMax XT II docking module without charging cable	DOCK2-2-1M-00-G
- GasAlertMax XT II docking module with charging cable	DOCK2-0-1C1M-00-G
- GasAlertMax XT II docking module without charging cable	DOCK2-0-1M-00-G
<i>GasAlertMax XT II modules are backwards compatible with legacy GasAlertMax XT models. For complete MicroDock II system configuration information, see MicroDock II section.</i>	
Quick connect fitting spares for hoses, kit of 2	M0931K
Auxiliary filter for GasAlertMax XT II pump, kit of 5	M5-AF-K2
Auxiliary filter for GasAlertMax XT II pump, kit of 100	M5-AF-K2-100
Hydrophobic pump filter replacement, kit of 5	XT-RF-H5
Hydrophobic pump filter replacement, kit of 50	XT-RF-H50
Hydrophobic pump filter replacement, kit of 100	XT-RF-H100
Particulate pump filter replacement, kit of 5	GA-PFMAX
Particulate pump filter replacement, kit of 50	GA-PFMAX-50
Particulate pump filter replacement, kit of 100	GA-PFMAX-100

Sensor Spares	Order Number
Replacement MICROpeL® combustible (LEL) sensor	SR-W-MP75C
Replacement Oxygen (O ₂) sensor	SR-X10-C1
Replacement MICROcel® oxygen (O ₂) sensor <i>(for legacy GasAlertMax XT models)</i>	SR-X-MC
Replacement MICROcel® hydrogen sulfide (H ₂ S) sensor	SR-H-MC
Replacement MICROcel® carbon monoxide (CO) sensor	SR-M-MC
Dummy sensor for combustible (LEL) sensor location	SR-W-MC-DUM
Dummy sensor for oxygen (O ₂) sensor location	SR-DUMM1
Dummy sensor for oxygen (O ₂) sensor location <i>(for legacy GasAlertMax XT models)</i>	SR-X-MC-DUM
Dummy sensor for toxic sensor locations	SR-TOX-MC-DUM
Replacement quad sensor screens, kit of 2, for GasAlertMax XT II	XT-SS-1
Replacement quad sensor screens, kit of 10, for GasAlertMax XT II	XT-SS-K2
Replacement quad sensor screens, kit of 2, for legacy GasAlertMax XT models	XT-SS
Replacement quad sensor screens, kit of 10, for legacy GasAlertMax XT models	XT-SS-K1



Quick Connect Fitting
M0931K
Quick connect fitting for hoses, kit of two

Hydrophobic Pump Filter
XT-RF-H5 / XT-RF-H50 / XT-RF-H100
Particulate Pump Filter
GA-PFMAX / GA-PFMAX-50 / GA-PFMAX-100
Both are available in kits of 5, 50 or 100

GasAlertMax XT II**4 - GAS DETECTOR WITH PUMP****How to Replace the Battery**

1. With monitor OFF, use No. 1 Phillips screwdriver to loosen retaining screw on pump enclosure (G)
2. Lift pump enclosure (G) so it unhooks from back enclosure (B)
3. Use No. 1 Phillips screwdriver to remove 6 screws from back enclosure (B)
4. Lift back enclosure (B) straight up
5. Lift battery (E) straight up, un-tread wires and disconnect battery wires from the battery connector (P)
6. Connect new battery wires (P), re-tread wires and place new battery on PCB (D)
7. Replace back enclosure (B)
8. Replace 6 screws in back enclosure (B) and hand-tighten until firm
9. Replace pump enclosure (G) and hand-tighten retaining screw until firm

How to Replace the Pump Module

1. With monitor OFF, use No. 1 Phillips screwdriver to loosen retaining screw on pump enclosure (G)
2. Lift pump enclosure (G) so it unhooks from back enclosure (B)
3. Use No. 1 Phillips screwdriver to remove 6 screws from back enclosure (B)
4. Lift back enclosure (B) straight up
5. Lift battery straight up and un-tread pump module (F) wires
6. Disconnect hose with connector from the black housing of the pump module (F)
7. Lift pump module (F) straight up and disconnect pump module (F) wires from the pump connector (Q)
8. Connect new pump module wires (Q), re-tread wires and place new pump module (F) on PCB (D)
9. Reconnect hose with connector to the black housing of the pump module (F)
10. Return battery to PCB (D) and replace back enclosure (B)
11. Replace 6 screws in the back enclosure (B) and hand-tighten until firm
12. Replace pump enclosure (G) and hand-tighten retaining screw until firm

Note: Please refer to the instrument's documentation (shipped with the product or available at www.gasmonitors.com) for complete instructions on common service procedures. Improper servicing or maintenance may affect warranty eligibility. BW assumes no liability for damages resulting from improper servicing or maintenance.

Service Parts	Order Number	Legend
Replacement front enclosure (yellow) for legacy GasAlertMax XT	XT-FC1	A
Replacement front enclosure (yellow) for GasAlertMax XT II	XT-FC1-1	
Replacement back enclosure (yellow) for GasAlertMax XT II*	XT-BC1	B
Replacement back enclosure (black) for GasAlertMax XT II*	XT-BC1B	
Replacement front enclosure (black) for legacy GasAlertMax XT	XT-FC1B	
Replacement front enclosure (black) for GasAlertMax XT II	XT-FC1B-1	
Replacement sensor enclosure (yellow) for GasAlertMax XT II*	XT-SC1	O
Replacement sensor enclosure (black) for GasAlertMax XT II*	XT-SC1B	
Replacement pump enclosure (yellow) for GasAlertMax XT II*	XT-PC1	G
Replacement pump enclosure (black) for GasAlertMax XT II*	XT-PC1B	
Replacement main PCB for GasAlertMax XT II	XT-MPCB1	D
Replacement main PCB with screws for GasAlertMax XT II	XT-MPCB2	
Replacement battery kit for GasAlertMax XT II*	XT-BAT-K1	E
Replacement pump kit for GasAlertMax XT II*	XT-RPUMP-K1	F
Replacement alligator clip for GasAlertMax XT II*	XT-AG-1	
Replacement LCD kit for GasAlertMax XT II*	XT-LCD-K1	C
Replacement screw kit for GasAlertMax XT II*	XT-SCREW-K1	
GasAlertMax XT II upgrade kit, black (Brazil region only)	XT-XWHM-B-BR-K	
GasAlertMax XT II upgrade kit, black	XT-XWHM-B-NA-K	
GasAlertMax XT II upgrade kit, yellow (Brazil region only)	XT-XWHM-Y-BR-K	
GasAlertMax XT II upgrade kit, yellow	XT-XWHM-Y-NA-K	

*Also compatible with legacy GasAlertMax XT models

How to Replace a Sensor

1. With monitor OFF, use No. 1 Phillips screwdriver to loosen retaining screw on pump enclosure (G)
2. Lift pump enclosure (G) so it unhooks from back enclosure (B)
3. Use No. 1 Phillips screwdriver to remove 6 screws from back enclosure (B)
4. Lift back enclosure (B) straight up
5. Use No. 1 Phillips screwdriver to remove 2 screws from back of PCB (D)
6. Lift PCB (D) together with battery and sensors straight up
7. Remove sensor (J-L) by sliding out or sensor (M) by pulling straight up from PCB (D)
8. Insert new sensor (J-M) into PCB (D)
9. Replace PCB (D) and 2 screws and hand-tighten until firm
10. Replace back enclosure (B)
11. Replace 6 screws in the back enclosure (B) and hand-tighten until firm
12. Replace pump enclosure (G) and hand-tighten retaining screw until firm

How to Replace the Sensor Screen

1. With monitor OFF, use No. 1 Phillips screwdriver to loosen retaining screw on pump enclosure (G)
2. Lift pump enclosure (G) so it unhooks from back enclosure (B)
3. Use No. 1 Phillips screwdriver to remove 6 screws from back enclosure (B)
4. Lift back enclosure (B) straight up
5. Use No. 1 Phillips screwdriver to remove 2 screws from back of PCB (D)
6. Lift PCB (D) together with battery and sensors straight up
7. Remove sensor screen (N) from front enclosure (A) by pulling straight up
8. Insert new sensor screen (N) into front enclosure (A)
9. Replace PCB (D) and 2 screws and hand-tighten until firm
10. Replace back enclosure (B)
11. Replace 6 screws in the back enclosure (B) and hand-tighten until firm
12. Replace pump enclosure (G) and hand-tighten retaining screw until firm

Note: Please refer to the instrument's documentation (shipped with the product or available at www.gasmonitors.com) for complete instructions on common service procedures. Improper servicing or maintenance may affect warranty eligibility. BW assumes no liability for damages resulting from improper servicing or maintenance.